

20

Strategy

GERMAN INSTITUTE FOR
ECONOMIC RESEARCH

20



PUBLISHED BY

DIW Berlin – German Institute
for Economic Research e.V.
Mohrenstraße 58, 10117 Berlin
Telefon +49 30 897 89 -0
Telefax +49 30 897 89 -200
kundenservice@diw.de
www.diw.de

EXECUTIVE EDITOR

Dr. Per Brodersen

SENIOR EDITOR

Lana Stille

EDITING

Marie Kristin Marten
Dennis Meiser- von Schmädel

DESIGN

Atelier Hauer + Dörfler, Berlin
www.hauer-doerfler.de



CONTENTS

Foreword	3
The Institute	4
Mission Statement	5
Our Key Focus	6
Our Aims	10
Organization	17



Prof. Dr. Gert G. Wagner, Prof. Marcel Fratzscher, Ph.D., Dr. Cornelius Richter, LL.M. (f.l.)

FOREWORD

Economies and societies are currently undergoing a transformation process which is changing the face of Germany and Europe. Society, the research community, and policy-makers are all confronted with the developments of globalization, digitization, the changing roles of labor and capital, the energy transition and environmental protection, as well as social participation in economic processes.

In the 90 years since its inception as the *Institut für Konjunkturforschung* (Institute for Business Cycle Research) in 1925, the German Institute for Economic Research (DIW Berlin) has repeatedly placed particular emphasis on key issues in its work and helped shape important economic and socio-political debates. Academic expertise and political independence form the foundations of the Institute and are indispensable for its contributions to public discourse.

Against this background, DIW Berlin, an active member of the Leibniz Association, has initiated a strategy process to define future challenges and specify new objectives – you are holding the results in your hands: **DIW_Berlin:2020** outlines the Institute's strategy for the coming years and how the

Institute will provide answers to the major challenges of our time. **DIW_Berlin:2020** is the result of intensive discussions about how we see ourselves at the Institute, our assessment of relevant research topics, and a review of our priorities in terms of content and methodology for the next decade.

We are proud to present the ideas and objectives of the Institute for the years ahead – learn more about our research, our work on infrastructure, our graduate trainings, and our aspirations to help shape the future as an Institute with both a long tradition and broad perspective.

DIW Berlin's Executive Board

Marcel Fratzscher

Cornelius Richter

Gert G. Wagner

THE INSTITUTE

The German Institute for Economic Research (DIW Berlin) combines excellent research, the provision of infrastructure and sound policy advice with opportunities for young researchers.

The Institute researches topics in the field of economic and social sciences and advises policy-makers and society at large on the basis of its specialist knowledge.

Historically an independent institution, DIW Berlin thinks and acts in international contexts and provides key expertise in the development of economies and societies in the 21st century.

MISSION STATEMENT

WHAT WE STAND FOR

The German Institute for Economic Research (DIW Berlin) combines excellent research, the provision of infrastructure and sound policy advice with opportunities for young researchers.

The Institute researches topics in the field of economic and social sciences and advises policy-makers and society at large on the basis of its specialist knowledge.

Historically an independent institution, DIW Berlin thinks and acts in international contexts and provides key expertise in the development of economies and societies in the 21st century.

HOW WE WORK

DIW Berlin systematically seeks connectivity between its research topics and future issues and problems – from a European and, beyond that, from an international viewpoint.

As a publicly funded and non-university research institution, DIW Berlin is particularly committed to a dialogue with the public about its work, its subject areas, and research findings. It promotes science and research along with international networking and offers a central location for academic debates in the heart of Berlin.

With its research infrastructure “Socio-Economic Panel” (SOEP), DIW Berlin provides excellent starting points for more in-depth cooperation. Through its Graduate Center, the Institute gives young researchers an opportunity to participate in a unique and practical training program.

WHAT WE VALUE

DIW Berlin sees its work as being at the interface between politics, the economy, and science and is particularly committed to academic freedom, scientific discourse, and the acquisition of knowledge.

We place great emphasis on workforce diversity, originality, quality, and transparency in identifying and addressing issues of content and methodology.

DIW Berlin is an employer committed to the reconciliation of work and private life and, as such, encourages the further development of its employees in this context.

OUR KEY FOCUS

We develop and promote our strengths based on our jointly developed in-house strategy **DIW_Berlin:2020**. Three key focus areas make up the core of this strategy:

- Germany in Europe
- Safeguarding the Future and Sustainability
- Quality of Life and Distribution

Together, these three areas form the backdrop of research work implemented in the various departments and clusters of DIW Berlin. The work of the “Socio-Economic Panel” (SOEP) is specifically included in the Institute’s work as part of the research infrastructure provided by DIW Berlin; business data is increasingly obtained from the research data centers of the statistical offices. DIW Berlin also sets standards with its methodological expertise in research, policy advice, and research infrastructure.

GERMANY IN EUROPE

The unification of Europe is a historical process and of greatest significance for the continent, its states, citizens, and economies. The economic and social development of Germany is taking place in a European context and cannot be viewed independently of our neighbors in Europe.

At the same time, Europe has an interest in Germany's analyses, viewpoints, and ideas about how to approach the challenge of unifying Europe.

Consequently, DIW Berlin is tackling a number of fundamental issues as part of its key focus of **Germany in Europe**:

- How is the economic situation developing in Germany, Europe, and the rest of the world?
- How can the financial and banking system in Europe be regulated to make it crisis-proof?
- How effective is European competition policy?

SAFEGUARDING THE FUTURE AND SUSTAINABILITY

Creating a strong foundation for future economic activity requires achieving a balance between economy and ecology, using natural resources wisely to ensure their preservation and regeneration, and devising alternative economies.

As a result, within its key focus of **Safeguarding the Future and Sustainability**, DIW Berlin is working on particularly wide-ranging issues:

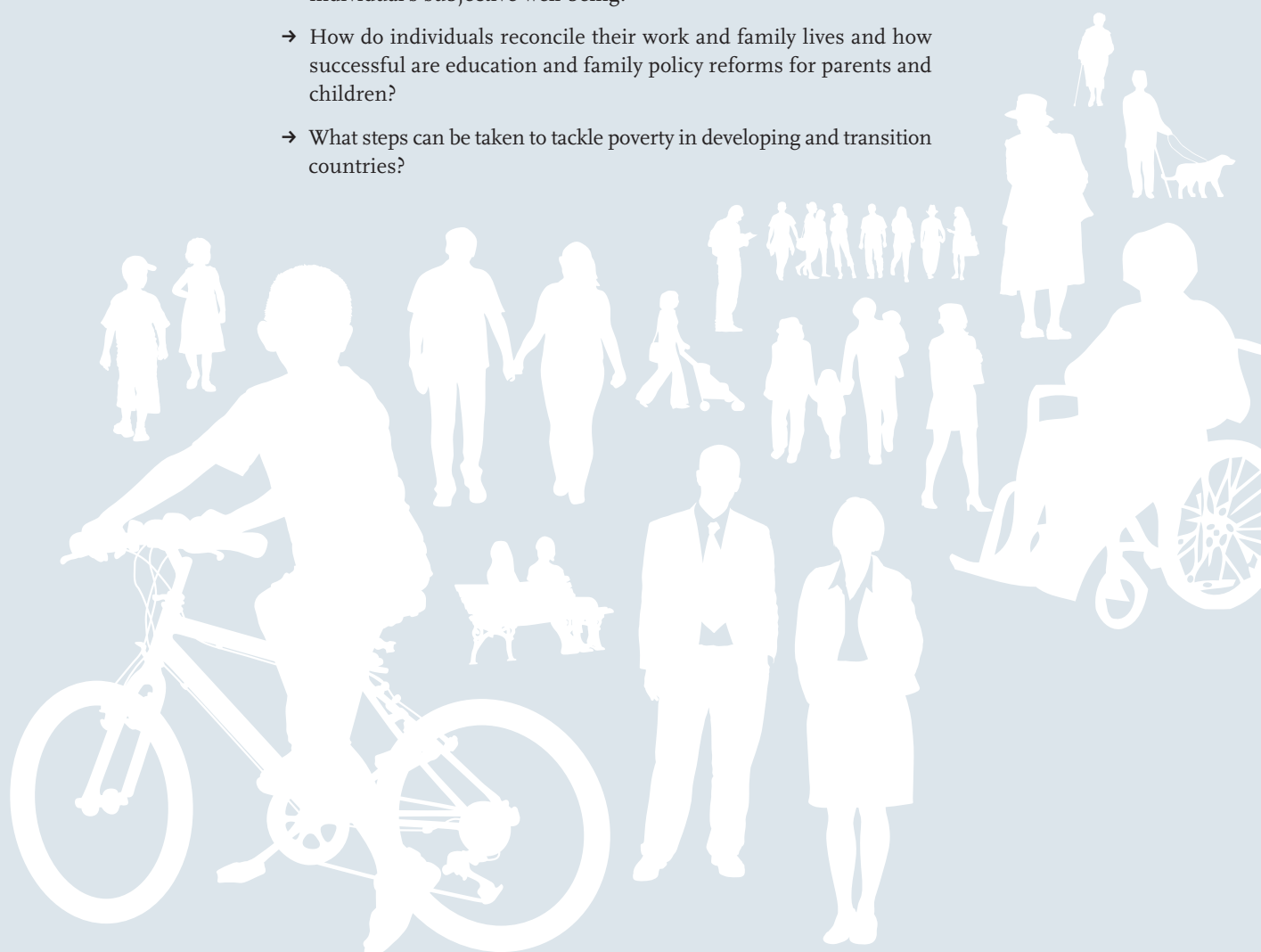
- What opportunities and challenges does the energy transition present?
- How can agricultural and food markets be designed to sustainably secure our food supply?
- What reforms can we implement to secure the future of the tax and transfer system and social security in times of demographic change?

QUALITY OF LIFE AND DISTRIBUTION

Given the demographic transition and the rapid pace of change in working environments, contemporary societies are faced with new tasks. What framework conditions should be applied to markets in order to improve social mobility and participation in society? What role does the government play in the issue of social responsibility? And how can the foundations for acceptable social cooperation be safeguarded and expanded in the 21st century?

DIW Berlin studies these questions from different perspectives within its key focus of **Quality of Life and Distribution**:

- How are the mechanisms of income and wealth distribution designed in Germany – and how does this distribution affect an individual's subjective well-being?
- How do individuals reconcile their work and family lives and how successful are education and family policy reforms for parents and children?
- What steps can be taken to tackle poverty in developing and transition countries?



OUR AIMS

As an active member of the Leibniz Association, DIW Berlin shares the Association's goals of combining excellence in research with the creation of relevant policy advice.



External Funding

from the German Research Foundation (DFG), the EU, the German government, and foundations



Publications

in peer-reviewed journals and reports

1

RESEARCH QUALITY AND QUANTITY

First-rate research is the key objective of all our departments. It is a prerequisite for top-quality scientific policy advice – and therefore a condition for the practical and problem-oriented work of the Institute for the benefit of society. This objective – confirmed again in the last evaluation in 2012 – is achieved by publishing in peer-reviewed journals. Third-party funds are secured through competitive tendering processes, above all, from the German Research Foundation (DFG), the EU, federal ministries, and foundations. The stated objective is to cover at least 33 percent of the research departments’ individual budgets with external funds.



Practical Research

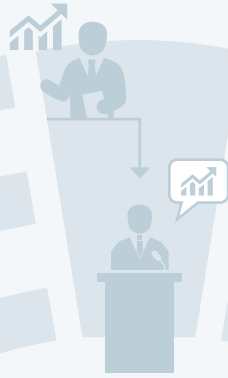
for the benefit of society

MACROECONOMICS
AND FINANCIAL
MARKETS

SUSTAINABILITY

INDUSTRIAL
ECONOMICS

PUBLIC FINANCES AND
LIVING CONDITIONS



independent analyses and policy recommendations



initiating important political debates on the economy and society

2

QUALITY AND RELEVANCE OF POLICY ADVICE

DIW Berlin's policy advice is based on its research findings which it actively and purposefully introduces to the public arena. The analyses and policy recommendations it develops are independent and initiate important policy debates on the economy and society. Successfully securing external funding in competitive tenders also remains a measure of the outstanding advice provided by the Institute. Further, intensive and targeted communication of DIW Berlin's analyses and recommendations provides important support for its policy advice.



targeted communication



research findings in the public dialogue

Promotion of Young Researchers at DIW Berlin



close cooperation with partner universities in Berlin and Brandenburg



internships in prestigious institutions



applied work in research departments of DIW Berlin



international doctoral students



international high-level contacts

3

PROMOTION OF YOUNG RESEARCHERS

one year of courses
+ three years of research
—
graduation after four years

The DIW Graduate Center actively supports young academics in the fields of economics and social sciences. Young researchers are given the opportunity to work in DIW Berlin's excellent cooperative and multidisciplinary research environment and at the same time also in close partnership with universities in Berlin and Brandenburg. The high quality of candidates of the PhD program in economics is ensured by advertising the DIW Graduate Center both in Germany and abroad. High standards are also essential for doctoral students at DIW Berlin in other disciplines and programs.



demography
and population

attitudes, values and
personality



family and
social networks

home, amenities, and contribu-
tions of private households

4

Research Infrastructure
"Socio-Economic Panel"
(SOEP)

**QUALITY AND INNOVATIVE ABILITY OF
RESEARCH INFRASTRUCTURE**

One of DIW Berlin's key features is its research infrastruc-
ture "Socio-Economic Panel" (SOEP) which contributes to the
provision of microdata for cutting edge research within the
Institute and for use by researchers both in Germany and
abroad. As an innovative infrastructure, the SOEP is involved
in the strategic positioning of DIW Berlin, working in coop-
eration with internal and external partners, and its data are
increasingly available to users outside the SOEP. The devel-
opment of quality criteria for research data has consolidated
SOEP's innovative strength. In addition, DIW Berlin develops
and maintains a number of sectoral databases e.g. for the con-
struction and transport sector, and participates in the devel-
opment of international databases that are used to make calcula-
tions for productivity, investment, and capital stocks.



work and
employment

income, taxes and
social security



health and care



integration, migration,
transnationalization



survey methodology
education and qualification



time use and
environmental behavior

“Society, the research community, and policy-makers are all faced with the developments of globalization, digitization, the changing roles of labor and capital, the energy transition and environmental protection, as well as social participation in economic processes.”

5

INTERNATIONALIZATION

Thanks to Europeanization and globalization, Germany's economy and society have become interconnected with international partners. As a result, DIW Berlin's research, consulting, infrastructure, and human resources increasingly reflect international perspectives. DIW Berlin is expanding its role as a European-based institution in the international arena and creating attractive conditions at the Institute for internationally mobile researchers. Its key focus and measures for achieving this are based on its internationalization strategy.

6

STRENGTHENING NETWORKS

Exchanging ideas in a professional setting is a precondition for excellence in research, policy advice, and infrastructure provision. Synergies across departments and clusters are used to create the maximum scope for communication and cooperation throughout the entire Institute. DIW Berlin will continue to promote disciplinary and interdisciplinary networking within and beyond Berlin, nationally and internationally, as well as with other institutions of the Leibniz Association and other non-university research institutes.

“Academic expertise and political independence form the foundations of the Institute and are indispensable for its contributions to public discourse.”

7

INTERNAL AND EXTERNAL COMMUNICATION

Research thrives on dialogue and public proliferation. The conditions for the exchange of ideas throughout the Institute and for internal communication are optimized and provide protected spaces for open discourse to ensure the early involvement of experts and stakeholders in research questions. DIW Berlin also uses new channels to communicate its findings to the research community, the general public, and decision-makers in federal and state ministries, the EU, and other institutions.

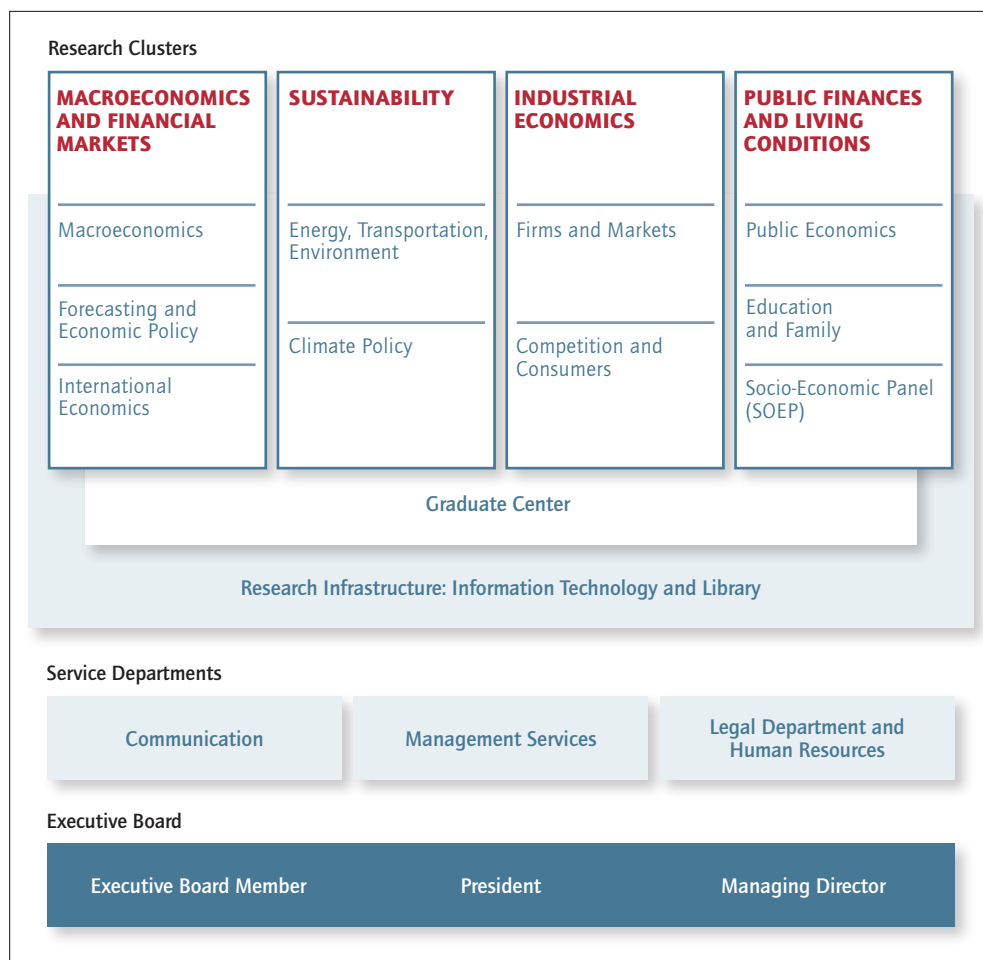
8

CAREER AND PERSONAL DEVELOPMENT

DIW Berlin aims to attract the best minds for its work. The *Berlin Economics Research Associates Program* (BERA) is a key component in achieving this. It is a structured, economic postdoctoral program which encourages first-rate researchers to come to the Institute and to Berlin as a research location. Other economic and social science networks are also used proactively.

DIW Berlin offers an attractive working environment while ensuring equal opportunities and family-friendly structures. DIW Berlin's initiatives closely follow Leibniz Association guidelines on working conditions for employees and career development. DIW Berlin is committed to the DFG's principles of equality and actively contributes to equal opportunities at the Institute with its support measures and initiatives.

ORGANIZATION



Institutional Bodies



Society of Friends



Consulting



| Last updated: June 2015

»DIW_Berlin:2020 outlines its strategy for the coming years and how the Institute will provide answers to the major challenges of our time.«



DIW Berlin – German Institute
for Economic Research e.V.
Mohrenstraße 58
10117 Berlin, Germany
www.diw.de

Member of the

